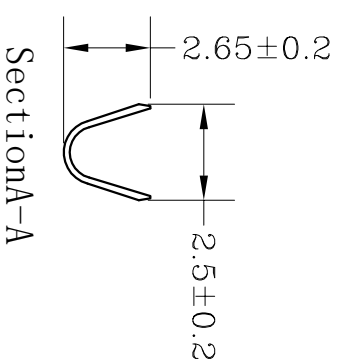
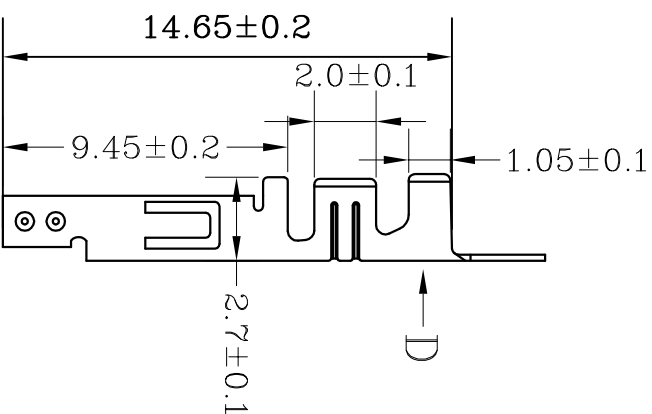
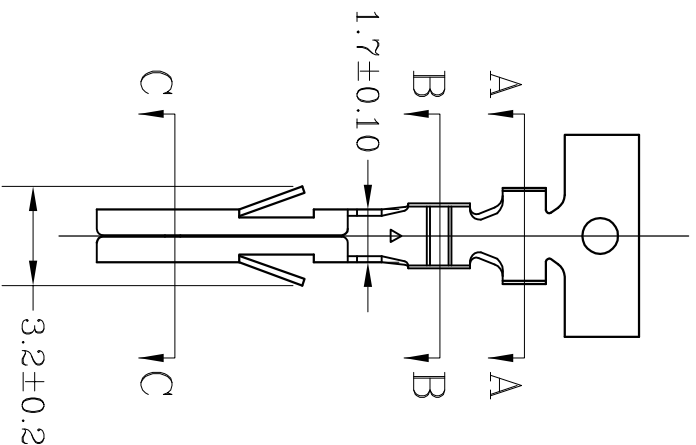
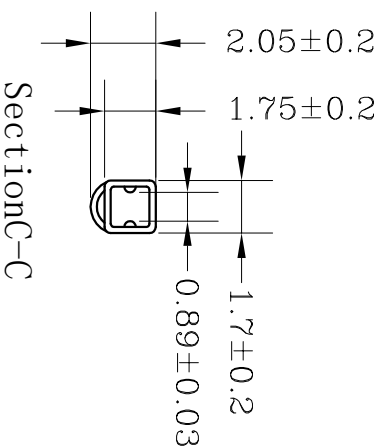


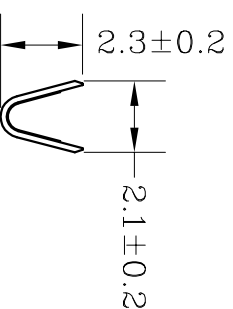
料号 Material No C4202TB-01	类别 Category	材料 The material Phosphor/Bronze	数量/pcs The number of pcs 10000/Reel
母端低脚正标	Terminal		



SectionA-A



SectionC-C



SectionB-B

规格 Specifications

- ◆1、极数 Poles: 1X2P/1X5P to 2X1P/2X12P
- ◆2、额定电流 Current rating: 9.0A AC, DC
- ◆3、额定电压 Voltage rating: 250V AC, DC
- ◆4、温度范围 Temperature range: -25°C to +85°C
- ◆5、接触电阻 Contact resistance: $\leq 10m\Omega$
- ◆6、绝缘电阻 Insulation resistance: $\geq 1000m\Omega$
- ◆7、耐电压 Withstand voltage: 1500V AC/minute
- ◆8、适用线规 Applicable wire: AWG #16 to #30
- ◆9、适用基板厚度 (Applicable PC board thickness): 0.8mm to 2.0mm

未注公差

>0.3	>3-18	>18-50	>50-120
------	-------	--------	---------

± 0.12	± 0.15	± 0.3	± 0.5
------------	------------	-----------	-----------

姚灿瑜	陈小波	王日和	
-----	-----	-----	--

HWT 广州市恒炜电子有限公司
Guangzhou HengWei Electronic Co., Ltd

单位	比例	Design Units	SIZE	页码
MM Only	—	METRIC	A4	

材料	图号	Part No
见图解		

品名 **C4202TB-01低脚正标**