

15

14

13

12

11

10

9

8

7

6

5

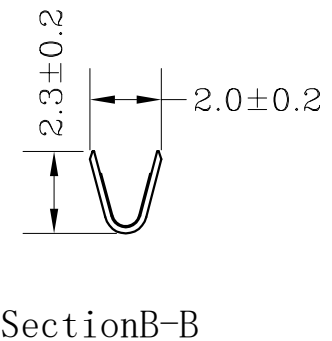
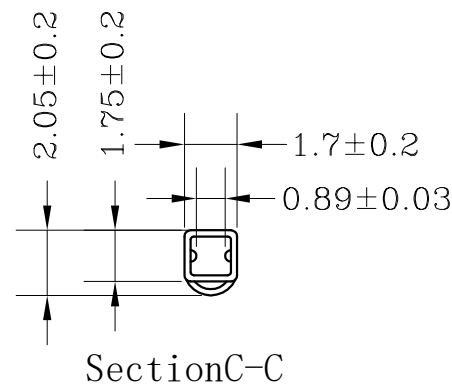
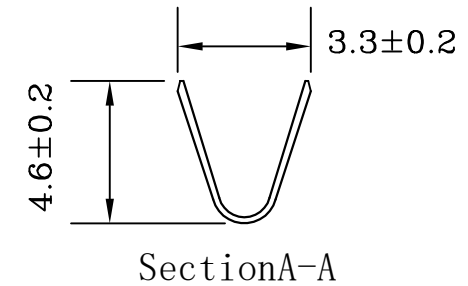
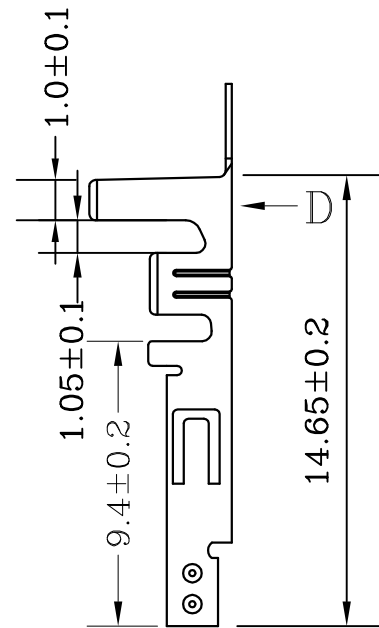
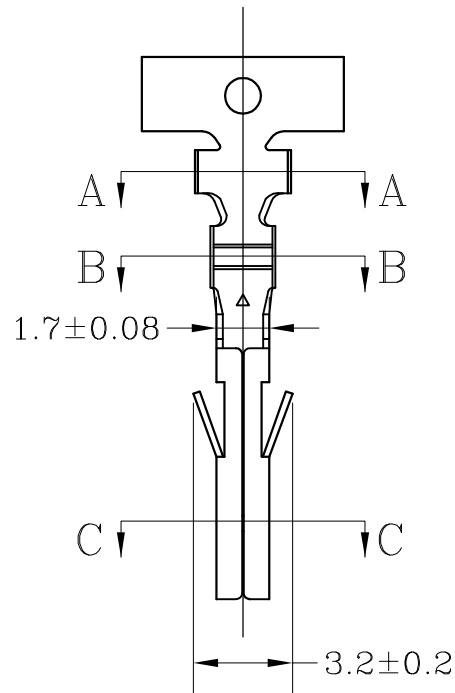
4

3

2

1

料号 Material No C4202TB-02 母端高脚正标	类别 Category Terminai	材质 The material Phosphor/Bronze	数量/pcs The number of pcs 5000/Reel
---	----------------------------	---------------------------------------	--



### 规格 Specifications

- ◆1、极数 Poles: 1X2P/1X5P to 2X1P/2X12P
- ◆2、额定电流 Current rating: 9.0A AC, DC
- ◆3、额定电压 Voltage rating: 250V AC, DC
- ◆4、温度范围 Temperature range: -25°C to +85°C
- ◆5、接触电阻 Contact resistance:  $\leq 10\text{m}\Omega$
- ◆6、绝缘电阻 Insulation resistance:  $\geq 1000\text{m}\Omega$
- ◆7、耐电压 Withstand voltage: 1500V AC/minute
- ◆8、适用线规 Applicable wire: AWG #16 to #30
- ◆9、适用基板厚度 (Applicable PC board thickness):  
0.8mm to 2.0mm

未注公差				HWT 广州市恒炜电子有限公司 GuangZhou HengWei Electronic Co., Ltd					
>0-3	>3-18	>18-50	>50-120	单位	比例	Design Units	SIZE	页码	
±0.12	±0.15	±0.3	±0.5	MM Only	—	METRIC	A4		
制作 审核 批准				材料	图号			Part No	
姚灿瑜 陈小波 王日和				见图解	品名	C4202TB-02高脚正标			

15

14

13

12

11

10

9

8

7

6

5

4

3

2

1