

15

14

13

12

11

10

9

8

7

6

5

4

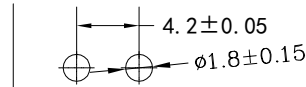
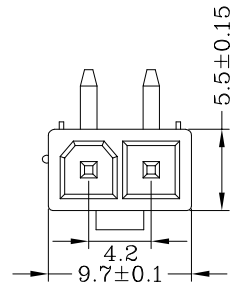
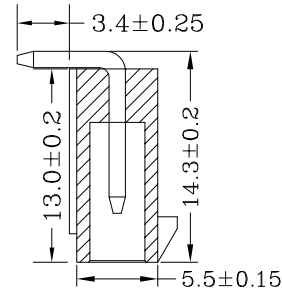
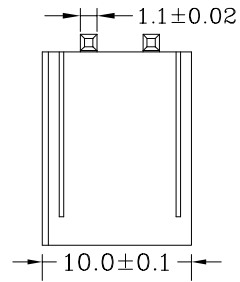
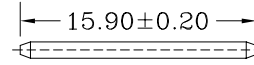
3

2

1

| | | | |
|-------------------|----------------|---|-----------------------------|
| 料号 Material No | 类别 Category | 材质 The material | 数量/pcs The number of pcs |
| 4202WR-1*2P | Wafer | 板壳 Base PIN针 Copper Needle W/Ton 66 UL 94V-0 (Black) Brass tin Plating | 1000pcs/栋 |

1.1*1.1±0.02



P. C. B LAYOUT

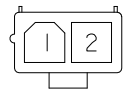
Dimensional Information:

| Poles | Part NO. | | Dimensions mm | |
|-------|--------------|------------|---------------|-------|
| | | | A | B |
| 2 | A4202-WR01X2 | 5569-1X2AW | 4.20 | 9.70 |
| 3 | A4202-WR01X3 | 5569-1X3AW | 8.40 | 13.80 |
| 4 | A4202-WR01X4 | 5569-1X4AW | 12.60 | 18.10 |
| 5 | A4202-WR01X5 | 5569-1X5AW | 16.80 | 22.40 |

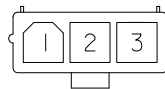
规格 Specifications

- ◆1、极数 Poles: 1X2P/1X5P
- ◆2、额定电流 Current rating: 5.0A AC, DC
- ◆3、额定电压 Voltage rating: 250V AC, DC
- ◆4、温度范围 Temperature range: -25°C to +85°C
- ◆5、接触电阻 Contact resistance: ≤15mΩ
- ◆6、绝缘电阻 Insulation resistance: ≥1000mΩ
- ◆7、耐电压 Withstand voltage: 1500V AC/minute
- ◆8、适用线规 Applicable wire: AWG #18 to #22
- ◆9、适用基板厚度 (Applicable PC board thickness):

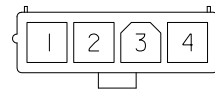
1.6mm to 2.0mm



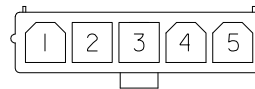
2 CKTS.



3 CKTS.



4 CKTS.



5 CKTS.

CIRCUIT SIZE LAYOUT

| 未注公差 | | | | HWT 广州市恒炜电子有限公司 GuangZhou HengWei Electronic Co., Ltd | | | | | |
|-------|-------|--------|---------|--|----|---------------|------|---------|--|
| >0-3 | >3-18 | >18-50 | >50-120 | 单位 | 比例 | Design Units | SIZE | 页码 | |
| ±0.12 | ±0.15 | ±0.3 | ±0.5 | MM Only | — | METRIC | A4 | | |
| 制作 | 审核 | 批准 | | 材料 | 图号 | | | Part No | |
| | | | | 见图解 | 品名 | 4202WR-1*2P弯针 | | | |

15

14

13

12

11

10

9

8

7

6

5

4

3

2

1