

15

14

13

12

11

10

9

8

7

6

5

4

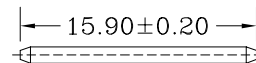
3

2

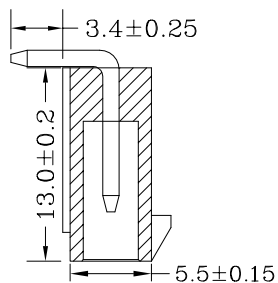
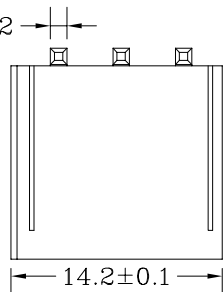
1

料号 Material No	类别 Category	材质 The material	数量/pcs The number of pcs
4202WR-1*3P	Wafer	镀光 Base PIN针 Copper Needle W/Ton 66 UL 94V-0 (Black) Brass tin Plating	1000pcs/栋

1.1\*1.1±0.02



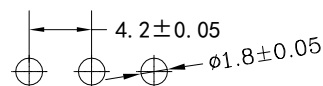
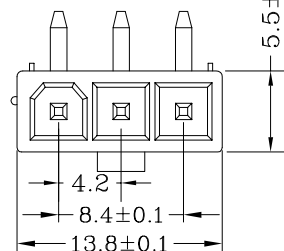
1.1±0.02



## Dimensional Information:

Poles	Part NO.		Dimensions mm	
			A	B
2	A4202-WR01X2	5569-1X2AW	4.20	9.70
3	A4202-WR01X3	5569-1X3AW	8.40	13.80
4	A4202-WR01X4	5569-1X4AW	12.60	18.10
5	A4202-WR01X5	5569-1X5AW	16.80	22.40

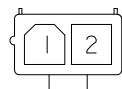
5.5±0.15



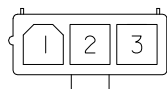
## P. C. B LAYOUT

## 规格 Specifications

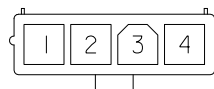
- ◆1、极数 Poles: 1X2P/1X5P
- ◆2、额定电流 Current rating: 5.0A AC,DC
- ◆3、额定电压 Voltage rating: 250V AC,DC
- ◆4、温度范围 Temperature range: -25°C to +85°C
- ◆5、接触电阻 Contact resistance: ≤15mΩ
- ◆6、绝缘电阻 Insulation resistance: ≥1000mΩ
- ◆7、耐电压 Withstand voltage: 1500V AC/minute
- ◆8、适用线规 Applicable wire: AWG #18 to #22
- ◆9、适用基板厚度 (Applicable PC board thickness): 1.6mm to 2.0mm



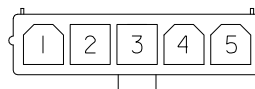
2 CKTS.



3 CKTS.



4 CKTS.



5 CKTS.

## CIRCUIT SIZE LAYOUT

## 未注公差

>0-3	>3-18	>18-50	>50-120
------	-------	--------	---------

**HWT** 广州市恒炜电子有限公司  
GuangZhou HengWei Electronic Co., Ltd

±0.12	±0.15	±0.3	±0.5	单位	比例	Design Units	SIZE	页码	
制作	审核	批准		MM Only	—	METRIC	A4		
				材料	图号			Part No	
				见图解	品名	4202WR-1*3P弯针			

15

14

13

12

11

10

9

8

7

6

5

4

3

2

1